



Telephone: 01234 855030

Below are details of our main product range. Click headings for further information  
If you do not see what you re looking for please call us.

You would be amazed at some of the things we do for our customers.

### [ENGINEERING PLASTICS](#)

Sheet, Bar & tube  
Nylon, Acetal, PVC, PTFE  
Polycarbonate, Polypropylene...  
PVC Doorstrip & hangers

### [PTFE PRODUCTS](#)

Valve packing, Joint Sealant  
Self adhesive tapes  
Coated Glass Cloth

### [ADHESIVE](#)

Retainer, Threadlock  
Sealing & Gasketing  
Superglue, RTV Silicon

### [BOILER PRODUCTS](#)

Ceramic & Fibreglass:-Rope,  
Ladder Tape & Webbing  
Door Joints, Sight Glasses  
Packing Sleeves, Cones.  
Insulation Products

### [RANGE OF RUBBERS](#)

Solid & sponge.  
Neoprene, Silicon, Insertion, Viton  
Mouldings & Extrusions  
Cut strips & self adhesive  
Fabricated Seals, Conveyor  
belts, Polycord, Sleeves & Bellows.

### [MACHINING & FABRICATIONS](#)

### [MECHANICAL SEALS](#)

Most manufacturers & designs  
From simple bellow / 'O' ring  
styles to technical cartridges.  
Identification & refurbishment

### [GASKETS](#)

Sheet material, Spiral wound  
Hand & Machine cut  
Rubber, fibre, cork, graphite...

### [COMPRESSION PACKING](#)

PTFE, Kevlar, Graphite.  
Full boxes, Cut lengths, rings  
Extractors, tips & cutters

### [HOSE & DUCTING](#)

Rubber, PVC, Nylon, PTFE, SS  
Various styles & assemblies  
Air & Water guns  
Fittings & Couplings

### [HYDRAULIC & PNEUMATIC SEALS](#)

'O' Rings, 'V' Seals, 'U' Rings  
Cup Seals, Dirt Wipers, Etc



## ENGINEERING PLASTICS



Nylon, Acetal, PVC, PTFE, Polycarbonate, Polypropylene .....

Supplied in sheet, rod & tube form.

Machined parts :- Washers, wear strips, bushes.

Fabrications :- Tanks, covers, guards.

### PVC Door Strip & Hangers

We supply PVC doorstrip in both general purpose & freezer grades in clear & colours.

A ribbed version is available for heavy wear areas.

Stainless Steel hook on suspension system for food areas & Aluminium twintrack for general applications.

Standard sizes :-

200mm x 2mm	300mm x 2mm
300mm x 3mm	400mm x 4mm

Supplied in 50 metre rolls.

Cut lengths & full kits also supplied.





## MECHANICAL SEALS



If you are replacing a current seal "like for like" or fitting a direct equivalent we can cross reference part numbers or identify from samples.

Please refer to our Ident-A-Seal guide.

We supply & stock a wide range of seals from several manufacturers such as :- John Crane, Flexibox, Sealol, Cyclam, Roten, Merkel, etc

To compliment our supply of new seals we offer a comprehensive refurbishment service covering most types of seals. This can involve cleaning, re-lapping faces & fitting new O rings. Or making new components complete, returning a used seal to as new condition for approximately 50% of new seal price for long term economy.



Our mechanical seal range is probably one of the widest in the UK, giving you, what you want.

Not, what a pressure salesman wants to sell you !



## PTFE PRODUCTS

We supply PTFE sheet, rod, tube, hose, seals, machined parts .....



### GOLDTEX

Self adhesive PTFE joint sealant. For forming gaskets with superior chemical & heat resistant properties. Non-contaminating, highly compressible.



### LOCKCORD

Unsintered PTFE cord for valve stem packing & sealing. Low coefficient of friction, easy to install.



### PTFE COATED GLASS CLOTH

Plain & adhesive backed for release & non-stick applications.



Telephone: 01234 855030

## GASKETS

NDA supply gaskets in small quantities & high volume, hand cut or by machine with press tools, knife blade, water jet or laser cutting

These can be standard table gaskets but we specialise in custom made in special sizes or materials.

Size can vary from very small to large multi piece gaskets such as 2 metre diameter.



### Gasket styles :-

- IBC - Inside bolt circle
- Full face
- PTFE envelope
- Spiral wound
- Taylor rings
- Self Adhesive Backed

### Materials :-

CNAF - Compressed non-asbestos fibre  
Solid Rubber - Insertion, Neoprene, EPDM, Viton , Silicone ...  
Foam - Neoprene, Silicone, Polyethylene  
Cork, Felt, PTFE





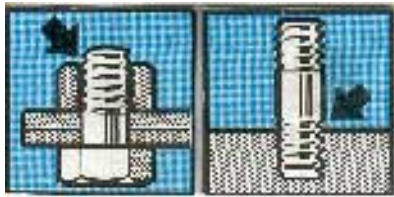
Telephone: 01234 855030

### ADHESIVE PRODUCTS

Anaerobic adhesives - Are solvent free & cure when deprived of air & through the catalytic effect of metals

#### Nut Lock 50M

A medium strength grade for locking all types of threaded fasteners but still allowing for disassembly.

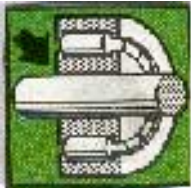


#### Stud Lock 230M

A high strength semi-permanent grade for locking threads which are unlikely to be disassembled.

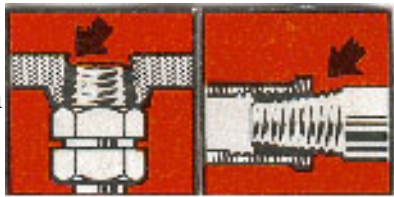
#### Retainer 230L

High strength retainer for bearings, bushes, sleeves & all cylindrical parts, eliminating the need for mechanical retaining methods



#### Hydraulic Sealant 100M

A product specially formulated for sealing hydraulic & pneumatic joints without contamination of the fluid.



#### Pipe Sealant FD10

A low strength, high viscosity sealant for pipes & coarse threads.

## Flange Sealant FD20

A high viscosity paste-like gasket eliminator which can be used directly onto metal surfaces but allows for easy disassembly.



Cyanoacrylate adhesives - are solvent free, cold curing single component adhesives which polymerise through the catalytic effect of the atmosphere humidity.



### Sicomet:-

77 for general purpose rubber, plastic & metal, gap fill up to 0.2mm.

8300 for rubber profiles, gap fill up to 0.05mm

8400 for rubber / plastic profiles & foams, gap fill up to 0.1mm

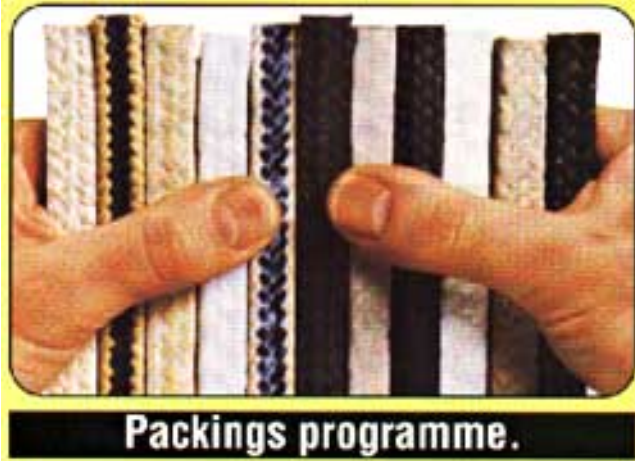
7000 for metals, gap fill up to 0.1mm.

99 for metals, gap fill up to 0.2mm

Also contact adhesive, RTV silicon rubber adhesive & silicone sealants.



## COMPRESSION PACKING



We offer sound technical & practical advice on many styles of glandpacking.

High Quality for effective sealing & long term economy or cheaper styles where performance is less critical.

We stock several basic styles in most sizes including Kevlar, PTFE, GFO fibre, Graphited synthetic fibre, PTFE impregnated vegetable fibre....  
Specials & specific brands are available on short lead times.

Food quality, abrasion resistant, chemical tolerant & high temperature capabilities.

Supplied in standard box quantities or cut lengths in three forms :-

- Short stock lengths
- Mitred lengths cut to suit a given shaft diameter ready for installation. Hence no contamination, waste material or lost time.
- Die formed rings for uniform compression throughout the stuffing box giving improved performance.

Labour saving tools :-

Packing cutters / knives

Packing extractors with replaceable wire tips or fixed forged tips.

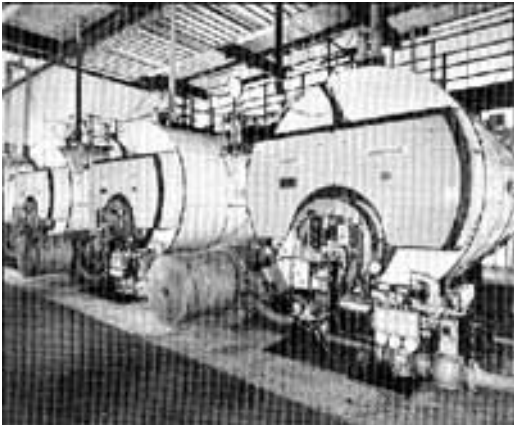




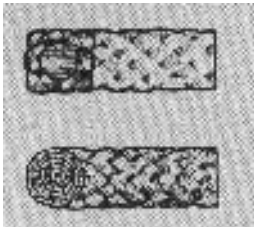
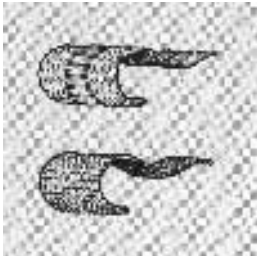


Telephone: 01234 855030

BOILER SERVICING MATERIALS



Fibreglass & Ceramic:-  
Ladder Tape, Webbing & Ropes



Topog-E moulded rubber boiler door joints 12.5 bar, 93C



Flange gaskets



Copper Washers, Jointing  
Paste, Valve Packing,  
PTFE tape.....



Sight glasses, Boiler tube brushes,  
Cones & Sleeves



Insulation Products



## HOSE, DUCTING & FITTINGS



Tubing ; - extruded & mandrel built ; -  
PTFE, Silicone, Neoprene, Polyurethane, PVC.

Reinforced hoses ; - For air, water, steam, food, chemicals, abrasives

Assemblies in PTFE & Stainless Steel with end fittings.

Flexible Ducting ; - In a wide range of materials & constructions

Fittings ; - Compression & push in fittings, hosetails etc

Couplings ; - Quick release for air, water, etc. EG Camlock, Bauer, PCL,  
Broomwade

Air & water guns



Telephone: 01234 855030

## RUBBER PRODUCTS

### Extrusions ;-

We offer a broad range of standard profiles such as U sections, glazing profiles, D sections, P sections & cord in Nitrile, EPDM or Neoprene rubber.

Made to order specials can be economical subject to profile, material & quantity.

We specialise in silicon rubber profiles for food & high temperature applications.

### Joined extrusions;-

As a cheaper alternative to moulding we can vulcanise or bond lengths of extrusion to form round or straight sided frame seals.



### Mouldings ;-

We can offer a comprehensive moulding service ranging from small batch simple items to larger runs with intricate tooling. Thus covering washers, coupling rubbers, bungs, seals, etc in most rubbers & Polyurethane.

### Sheeting ;-

Full rolls, cut lengths & strips.

Solid rubber - Neoprene, Nitrile, Natural, Viton, Silicone, EPDM, Polyurethane.

Sponge rubber - Plain or adhesive backed, Neoprene, EPDM, Polyurethane, Silicone.



### Conveyor Belts ;-

PVC, Polyurethane & rubber in cut lengths, endless belts, cord & rings

Special Fabrications ;- Bonded seal rings, bellows, discharge sleeves, label presser belts, pinch valve sleeves .....



Rubber covered rollers & wheels ;-  
In most rubbers & Polyurethanes, new or stripped & re-covered



Before



After



## HYDRAULIC & PNEUMATIC SEALS



We supply most well known brands such as Freudenberg Simrit, Gaco, Parker, Aldona etc.

Standards & made to order specials in a variety of materials & profiles. High & low volume.

Range includes ;-

O rings, cord, back up rings, Quad rings & square section rings.

Rotary shaft seals, circlips & bonded seals.

Wipers, cup seals, V rings, U seals, Fluid seals, Chevron seals.

Selection boxes - copper washers, fibre washers, bonded seals, O rings, splicing kit.





## MACHINING & FABRICATIONS

To complete our service package we are pleased to offer sub-contract machining and fabrication facilities.

### CAPACITY LIST

#### TURNING

Up to 500mm diameter swing x 2 metres.  
CNC Lathe 200 dia x 300 between centres.

#### BORING

Horizontal 1.25m x 1.25m  
Vertical up to 60" dia x 23" height.  
CNC horizontal & vertical boring m/c 2.2m x 0.7m x 0.9m.

#### HARDENING & GRINDING

Surface & cylindrical.  
Universal up to 4" dia x 1m long.

#### BROACHING & SLOTTING

#### MILLING

Large & small vertical universal machines.  
Algor mill 3.2m x 0.9m x 0.9m.  
CNC machine centres 610 x 460 x 550mm.

#### WELDED FABRICATIONS

Any size up to 2.5 tons.

#### ROLLING & BENDING

#### GUILLOTINE & AUTOMATIC SAWING

\* Drawing facilities for design or copy.  
We pride ourselves on quality, delivery and flexibility.



NDA Engineering Equipment Limited



Telephone: 01234 855030

Office hours	Monday to Friday	8.15 am - 5.00pm
	Saturday	8.30am - 12.00pm

NDA Engineering Equipment Limited  
Sunbeam Road  
Woburn Road Industrial Estate  
Kempston  
Bedford  
MK42 7BY

Telephone: 01234 855030  
Fax : 01234 840779  
email: [sales@nda-eng.co.uk](mailto:sales@nda-eng.co.uk)